

World Cleanup Day- 2018



CERC-ENVIS Resource Partner

Be focused on **sustainable waste solutions** !



Website: www.cercenvis.nic.in and

FB: www.facebook.com/EcoProductsEcoLabeling 



World Cleanup Day- 2018

World Cleanup Day (also known as WCD) is a global social action programme aimed to fight the global solid waste problem. The World Cleanup Day is spanned for 24-hour period, world's time zones until concluding near the international date line in Hawaii. It falls usually on 15th September.

CERC-ENVIS Resource Partner initiated to celebrate the World Cleanup Day, not for a day, but for the long term to get the sustainable outcome. CERC-ENVIS team planned to clean up the Consumer Education and Research Centre campus. This campaign aims at reducing the amount of materials entering landfills. This will not only reduce environmental impacts, but also build upon a more sustainable future. Composting is one strategy to achieve these goals.

The CERC campus is spread over 10,000 sq. meters with well maintained greenery. The campus has a variety of plants, including trees and shrubs. As a result, dry leaf and garden waste become a growing concern.

For long- term sustainability of the environment, compost pit has been made. So dried, fresh leaves and other garden waste can be composted with great ease and efficiency without a great deal of investment. The compost production and use of compost for the plants not only retain the soil fertility, but also saves money for purchasing of the pesticides and other supplements.

Distributed the green tips pamphlet on How to separate your household waste(http://www.cercenvis.nic.in/PDF/waste_seg_eng.pdf) and All you need to know about how to make compost (http://www.cercenvis.nic.in/PDF/waste_seg_eng.pdf) to CERC visitors.



CERC's Green campus







After cleaning the CERC campus



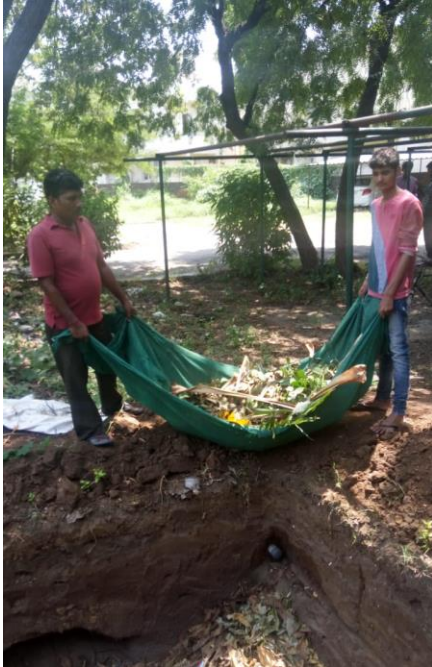
Digging the area of land in the corner of the garden for compost pit



Excavate the compost pit size 6x6x6



Compost Collection-leaf and other plant garbage to dump into the compost pit



Helpers dumping compost to the compost pit.



We drive roughly 90 percent of garden garbage to the compost pit for composting





The world cleanup day's Campaigning and composting pilot project had a positive clean impact on the CERC campus.